

WE DELIVER ELEVATED SOLUTIONS

Quality outcomes achieved by
meeting your manufacturing challenges.

ELEVATE[™]
SOLUTIONS GROUP



ISO9001: 2015
December 2023



Registered Facility
No: 3015533540



Certified Board of
Pharmacy Third
Party Distributor



NEW industry standard mobile contact lens
display kit is engineered, molded, assembled,
and shipped by Elevate Solutions.

Injection Molding | Kitting & Assembly | Warehousing & 3PL



On the job worker training programs are process driven and yield near zero employee turnover.

THE MISSION

To help our customers achieve their personal and business goals by listening and anticipating needs, planning with extreme rigor, taking ownership for problem solving and acting with humility and honesty at all times.

11,000+ computer located pallet positions and 22 loading docks to support all of your 3PL needs.



esgworks.com

YES, WE ARE YOUR SUPPLIER, BUT WE ARE ALSO YOUR PARTNER.

Pursue your business success by working with a partner intent on providing the ideal manufacturing solutions.

THE CHALLENGE

Elevate Solutions Group (ESG) had a problem – our kitting and 3PL business for the contact lens industry was booming but relied heavily on an increasingly unreliable supply chain.

Injection molders were producing parts with color streaking, flash, short shots, and out of spec inconsistencies. Multiple suppliers had been given opportunities to address the issues and failed. It was unacceptable and the decision was made; if we wanted injection-molded components that meet our standards for quality, we'd have to make them ourselves.



160,000 square foot facility, ESG is ideally located just west of Atlanta, GA.

THE SOLUTION

In 2019, ESG stepped up and made a huge investment. A site was identified, and industry experts were hired to lay out a plan. Every piece of equipment was carefully chosen for its efficiency, technical capabilities, expandability, and purchased NEW.

Robotics and automation were made to work seamlessly with warehousing and logistics. The result is a modern, state-of-the-art facility that can reliably produce and deliver sophisticated programs made with some of the highest quality components in the nation.



A range of presses from 100-940T can deliver consistent color quality to within 1g of material.

Kitting assembly for Bausch + Lomb meticulously performed by employee.



AS YOUR PARTNER, WE SHARE OUR SUCCESS WITH YOU.

Vertical integration has enabled us to build one of the most efficient and reliable contract manufacturing businesses in the country.

THE BENEFIT - *to you!*

We have achieved a true end-to-end manufacturing solution all under one roof. With a team of dedicated, experienced personnel, we partner with you to find the most effective means of delivering quality solutions so that you can focus on what's most important - your business. We handle the molding, decorating, assembly, kitting, warehousing, and 3PL.

Today, 100% Nissei presses produce color consistent parts across the fleet to within 1g per gaylord of material, water temperatures are controlled to 1°F, integrated automation systems work tirelessly to deliver to workstations for assembly and computers track production and can instantly locate more than 11,000 pallet positions in the finished goods warehouse.

A SYMPHONY OF MANUFACTURING CAPACITIES TO SERVE YOU BETTER.

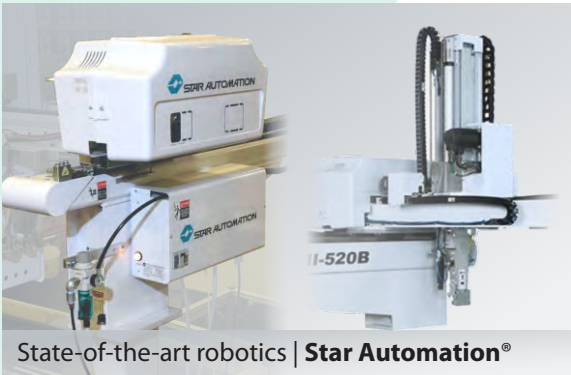
Technologies interfacing with one another to achieve greater quality and economies of design.



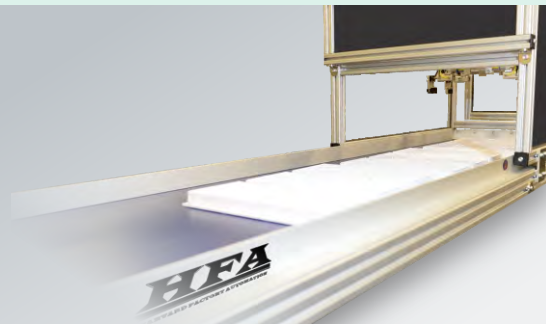
100% NEW Nissei presses (2020) ranging from 100T to 940T | Nissei®



Manages two materials simultaneously | **Vismec®**



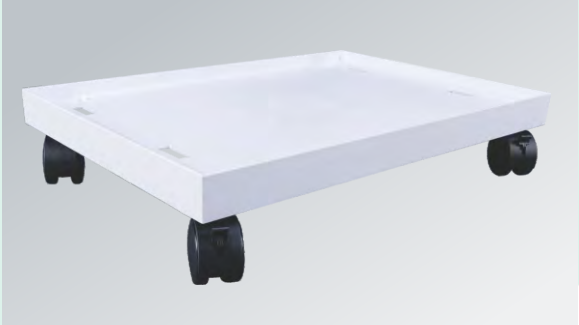
State-of-the-art robotics | **Star Automation®**



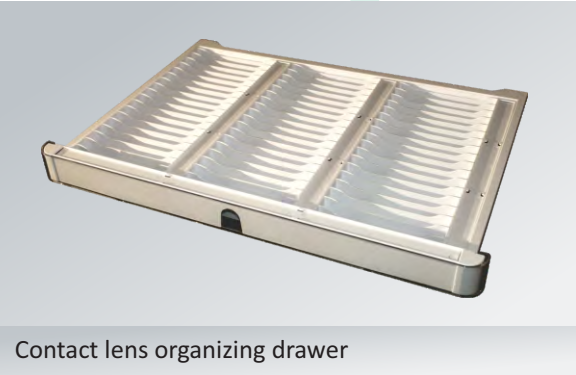
Fully interfaced conveyors | **HFA®**

PRODUCING PRODUCTS FULLY ASSEMBLED AND READY TO SHIP

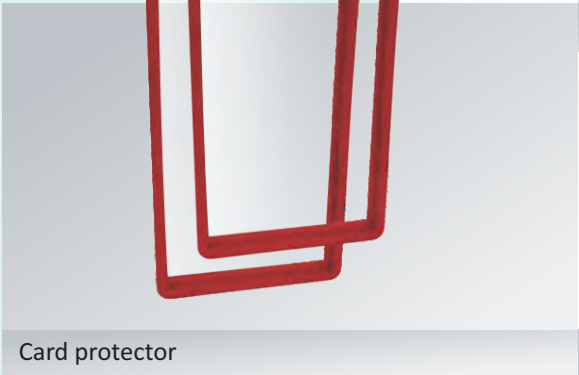
Molding, kitting & assembly, warehousing, and 3PL - we provide an elevated experience for you!



Mobile cart base with wheels



Contact lens organizing drawer



Card protector



Hanging bird feeder

WE DELIVER ELEVATED SOLUTIONS

Quality outcomes achieved by
meeting your manufacturing challenges.



Elevate Solutions Group, LLC
7900 Troon Circle SW
Austell, GA 30168

KEY CONTACTS

Mike Shippel, CEO
Mike.Shippel@esgworks.com
678.446.6867

Michael Sinclair, President
Michael.Sinclair@esgworks.com
404.271.9851

Chip Hembree, VP of Mfg. and Product Integration
Chip.Hembree@esgworks.com
678.459.7697

Paul Larate, General Manager
Paul.Larate@esgworks.com
678.779.2664

Chris Gardner, VP of Sales and Marketing
Chris.Gardner@esgworks.com
585.414.3116

Join us:

